

## 4FHS0660CA1B15V-Y01A00 Data Sheet

### Description

4FHS0660CA1B15V-Y01A00 is a high-performance digital GDU core based on ASIC as the digitally controlled developed by Firstack for 3L-NPC inverter, with complete protection functions and integrated fault management system. Perfectly solving the two major issues of "turn-off timing sequence" and "large commutation circuit turn-off peak" in 3L-NPC topology, advanced the reliability of NPC topology be comparable to 2-level, allowing customers to use 3L-NPC inverter as same as 2-level.

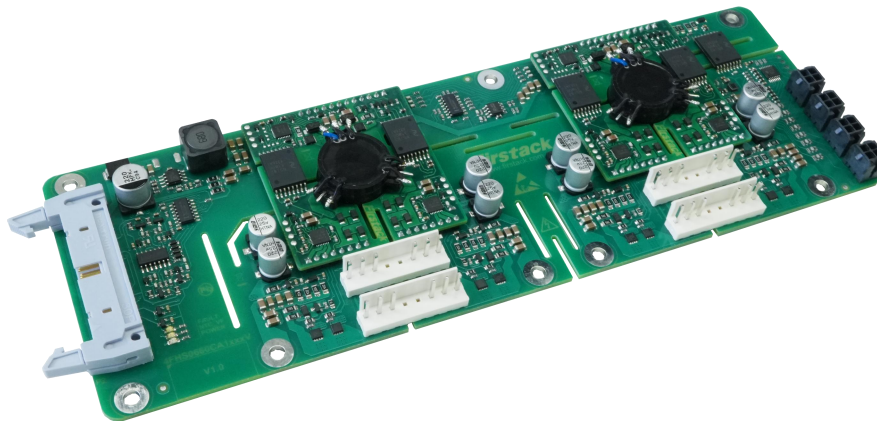


Fig. 1 4FHS0660CA1B15V-Y01A00

#### Advantages:

1. Single-channel output 6W/60A.
2. Suitable for the 3L-NPC scheme with A+B IGBT.
3. Short-circuit protection (SSD)
4. Undervoltage lockout protection
5. Turn-off timing sequence

#### Classical application:

1. PV inverter.
2. SMPS.

## Table Content

Description .....	1
Functional block diagram .....	3
Use Steps and Precaution .....	4
Package Drawing .....	6
Pin Definition .....	7
Driving Parameters .....	9
Function Description .....	13
◆ Short-circuit protection .....	13
◆ Undervoltage protection .....	13
◆ Dead Time .....	14
◆ Short pulse suppression .....	14
◆ NTC sampling .....	14
◆ Intelligent fault management system .....	15
Ordering Information .....	18
Technical Support .....	18
Legal Disclaimer .....	18
Contact Information .....	18

## Functional block diagram

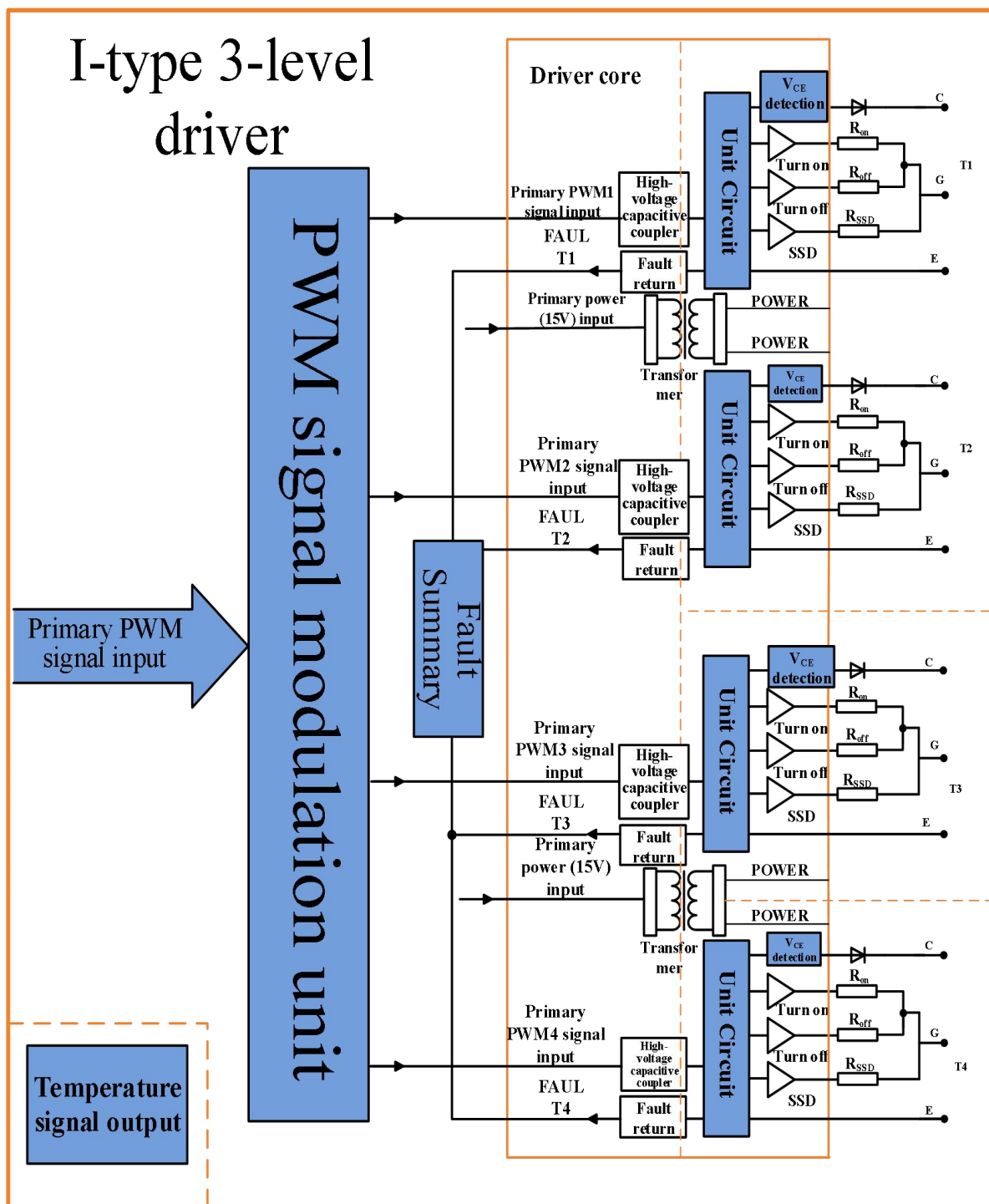


Fig. 2 Functional block diagram

## Use Steps and Precaution

Simple use steps of the gate driver are as follows:

1. Choose suitable GDU

Pay attention to the IGBT module model during usage process. It is invalid for non-designated IGBT modules, at the same time, improper use may cause the gate driver and the module failure.

2. Install the gate driver on the IGBT module

Any treatment of IGBT modules or gate drivers should follow the general specifications for the protection of electrostatic-sensitive devices required by the International Standard IEC 60747-1 Chapter IX or European Standard EN 61340-5-2 (i.e., workplaces, tools, etc. must meet these standards).

If these specifications were ignored, both the IGBT and the gate driver might be damaged.



3. Connect the GDU to the control unit

Connect the GDU connector to the control unit and provide a suitable power supply voltage for the GDU.

4. Check the function of the gate driver

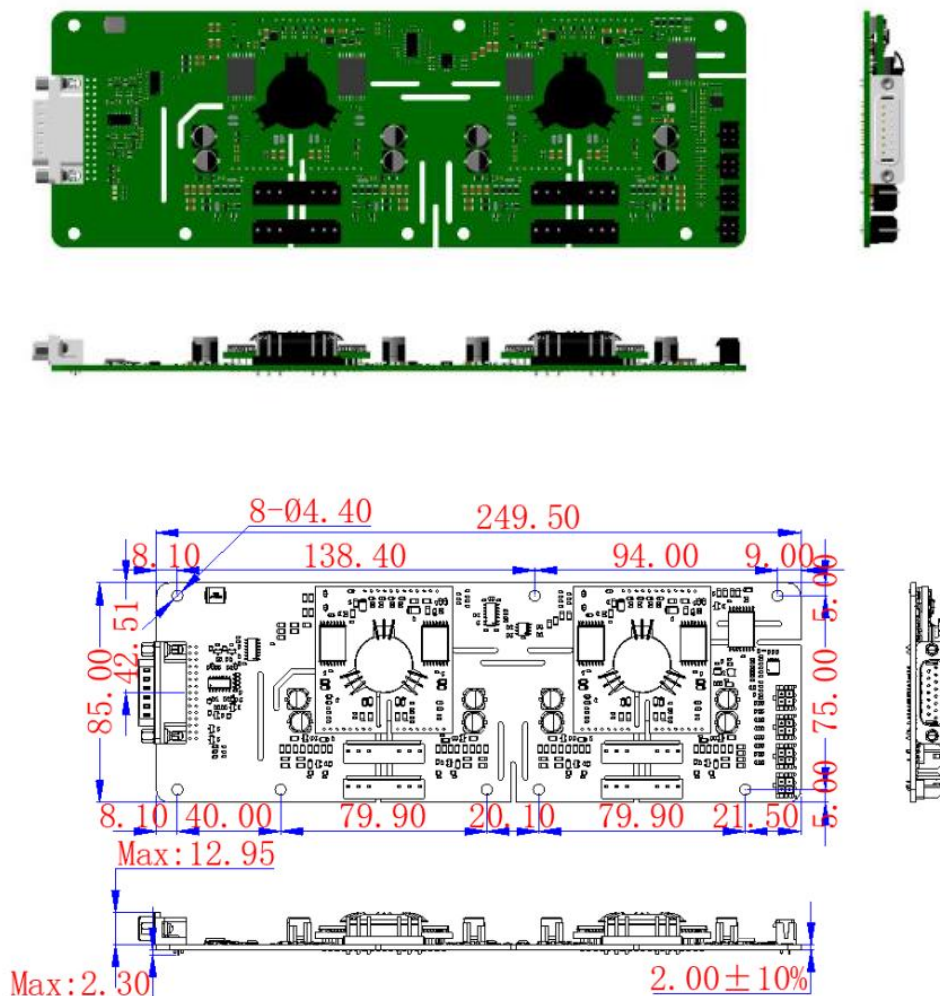
Check the gate voltage: for the turn-off state, the rated gate voltage is specified in the corresponding data sheet, for the turn-on state, the voltage is 15V. Please also check the input current of the gate driver with and without a control signal. For the digital driver of Firstack, when a suitable supply voltage is provided to the driver, the drive status indicator TEST (green) keeps on.

These tests should be performed prior to installation, as the gate terminals may not be accessible after installation.

## 5. Set up and test the power unit

Before starting the system, it is recommended to check each IGBT module with single pulse and double pulse test method separately. In particular, Firstack recommends that users ensure that the IGBT module does not exceed the operating range specified by SOA even under the worst conditions, as this is strongly dependent on the specific converter architecture.

## Package Drawing



Note:

1. The thickness tolerance of the board is  $\pm 10\%$ ;
2. Other dimensional tolerances refer to GB/T1804-m.

### Connector Manufacturer and Part Number

Number	Label	Manufacturer	Part Number	Recommended Matching Terminals
1	P1	WCON	6223-15MSNS0B02	/
2	P5,P6,P7,P8	WCON	WF3963-WSH08B02	WF3963-H08B01
3	P4,P9,P10,P11	CJT	C3030WV-2x2P-LCP	WE3001-2H02B01

## Pin Definition

### P1 Pin Definition:

Pin	Name	Description	Pin	Name	Description
1	V <sub>DC</sub>	Power supply input	2	V <sub>DC</sub>	Power supply input
3	IN1	T1 PWM signal	4	IN2	T2 PWM signal
5	SO	Fault summary	6	IN3	T3 PWM signal
7	IN4	T4 PWM signal	8	FOUT	Frequency output
9	GND	Primary side reference ground	10	GND	Primary side reference ground
11	GND	Primary side reference ground	12	GND	Primary side reference ground
13	GND	Primary side reference ground	14	GND	Primary side reference ground
15	GND	Primary side reference ground			

### P5, P6 Pin Definition:

Pin	Name	Description	Pin	Name	Description
1	Vcesat-T2	T2 detection signal	5	NC	Free
2	ACOM-T2	T2 reference ground	6	Vcesat-T1	T1 detection signal
3	GATE-T2	T2 gate signal	7	ACOM-T1	T1 reference ground
4	NC	Free	8	GATE-T1	T1 gate signal

### P7, P8 Pin Definition:

Pin	Name	Description	Pin	Name	Description
1	Vcesat-T3	T3 detection signal	5	NC	Free
2	ACOM-T3	T3 reference ground	6	Vcesat-T4	T4 detection signal
3	GATE-T3	T3 gate signal	7	ACOM-T4	T4 reference ground
4	NC	Free	8	GATE-T4	T4 gate signal

## P4 Pin Definition:

Pin	Name	Description	Pin	Name	Description
1	NTC1	Module 1 temperature signal	3	NTC2	Module 2 temperature signal
2	GND-T4	T4 ground	4	GND-T4	T4 ground

## P9 Pin Definition:

Pin	Name	Description	Pin	Name	Description
1	NTC5	Module 5 temperature signal	3	NTC6	Module 6 temperature signal
2	GND-T4	T4 ground	4	GND-T4	T4 ground

## P10 Pin Definition:

Pin	Name	Description	Pin	Name	Description
1	NTC3	Module 3 temperature signal	3	NTC4	Module 4 temperature signal
2	GND-T4	T4 ground	4	GND-T4	T4 ground

## P11 Pin Definition:

Pin	Name	Description	Pin	Name	Description
1	NTC7	Module 7 temperature signal	3	NTC8	Module 8 temperature signal
2	GND-T4	T4 ground	4	GND-T4	T4 ground

\*The gate driver samples the temperature signals of 8 modules.

\*NTCx is the temperature signal of module x, which is floating when not in use.



## Driving Parameters

### Absolute Maximum Ratings

Parameter	Note	Min.	Max.	Unit
$V_{DC}$	$V_{DC}$ to GND		15.5	V
Logic input and output logical voltages	Primary side, to GND		15.5	V
SO output current	Fault condition		50	mA
Gate peak current	$I_{peak}$		60	A
Output power per channel	$T_A \leq 85^\circ\text{C}$		6	W
Test voltage (50Hz $V_{AC}/1\text{min}$ )	Primary to secondary side		5	kV <sub>RMS</sub>
	Secondary to secondary side		4	kV <sub>RMS</sub>
dv/dt			50	kV/ $\mu\text{s}$
Operating temperature		-40	85	$^\circ\text{C}$
Storage temperature		-40	85	$^\circ\text{C}$

### Recommended Operating Conditions

Parameter	Note	Min.	Typ.	Max.	Unit
$V_{DC}$			15		V
PWM			15		V

### Electrical Characteristics

Power supply	Note	Min	Typ	Max	Unit
Power supply current	Without load, Note 1		0.35		A
Coupling capacitance	Primary to secondary side, Note 2		12		pF
<b>Power monitoring</b>					
Threshold			12		V

## Input and output logic

Input impedance		10	kΩ
Turn-on threshold	Note 3	10.2	V
Turn-off threshold	Note 4	6.8	V
SOx output potential		15	V

## Short-circuit protection

V <sub>CE</sub> monitoring threshold		13	V
Response time	T1, T4, Note 5	7.0	us
	T2, T3, Note 5	8.7	us
Blocking time	T1, T4	85	ms
	T2, T3	75	ms

## Timing characteristics

Turn-on delay	T1, Note 6	1400	ns
	T2, Note 6	1400	ns
	T3, Note 6	1400	ns
	T4, Note 6	1400	ns
Turn-off delay	T1, Note 7	1400	ns
	T2, Note 7	1400	ns
	T3, Note 7	1400	ns
	T4, Note 7	1400	ns
Rise time	T1, Note 8	220	ns
	T2, Note 8	500	ns
	T3, Note 8	500	ns
	T4, Note 8	220	ns
Fall time	T1, Note 9	900	ns

	T2, Note 9	3500	ns
	T3, Note 9	3500	ns
	T4, Note 9	900	ns
Fault hold time		17	ms
<b>Output characteristics</b>			
Gate turn-on voltage		15	V
Gate turn-off voltage		-10	V
Gate static impedance		10	kΩ
<b>Electrical isolation</b>			
Creepage distance	Primary to secondary side, Note 10	15.5	mm
	Secondary to secondary side	10.5	mm
Clearance distance	Primary to secondary side	14.5	mm
	Secondary to secondary side	9	mm
<b>NTC temperature detection</b>			
NTC temperature detection range		-40	125 °C
<b>Built-in dead time</b>			
(T1&T3) (T2&T4)		4	μs

Unless otherwise specified, all data are based on +25°C and V<sub>DC</sub>=15V.

Note:

1. Power supply current: connected to IGBT, but no PWM input;
2. Coupling capacitance: the values of coupling capacitance are within the range of values given in the table;
3. Turn-on threshold: the input voltage value at the moment of level-flip when turn on;
4. Turn-off threshold: input voltage value at the moment of level-flip when turn off;
5. Response time: the time from the occurrence of the fault to the start of soft shut down;

6. Turn-on delay: the time required to transmit the rising edge of the PWM signal input from the primary side to the rising edge of the gate driver of the secondary side;
7. Turn-off delay: the time required to transmit the falling edge of the PWM signal input from the primary side to the falling edge of the gate driver of the secondary side;
8. Rise Time: the amount of time from 10% of the gate turn-off voltage(-10V) to 90% of the gate turn-on voltage(+15V) (influenced by gate parameters);
9. Fall Time: the amount of time from 90% of the gate turn-on voltage(+15V) to the gate turn-off voltage(-10V)(influenced by gate parameters);
10. Creepage distance: refer to IEC61800-5-1-2007, meet the basic isolation requirements of pollution level 2 at an altitude of less than 2km.

## Function Description

### ◆ Short-circuit protection

The driving circuit determines whether the IGBT is in a short-circuit state by detecting the collector voltage  $V_{CE}$  when the IGBT turns on.

The  $V_{CE}$  voltage is detected by high-voltage diodes. When the  $V_{CE}$  voltage exceeds the set threshold (indicating that the IGBT has entered the DESAT state), the gate driver determines that the IGBT is in a short-circuit state, in according to the requirements of the ANPC/NPC topology, the driver turns off the IGBTs in the sequence of first turning off the outer transistors and then the inner transistors, and returns the fault to the master computer unit at the same time. All IGBT should implement SSD strategies during the fault session.

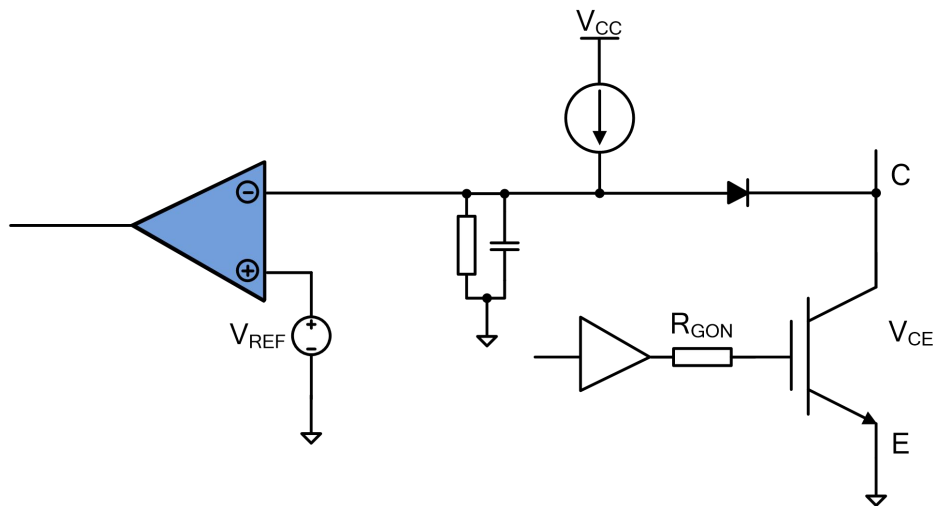


Fig.4  $V_{CE}$  desaturation detection circuit

### ◆ Undervoltage protection

The driver board monitors the positive and negative power supply of the secondary side at the same time. When the absolute value of the positive or negative voltage of the secondary side is lower than the threshold voltage, the driving circuit determines that an undervoltage fault has occurred and will feed back a fault signal to the master computer. The gate driver will turn off the IGBT according to the order of turning off the IGBT outside first and then the IGBT inside.

For IGBT bridge arms, Firstack intelligent GDU strongly suggests that any IGBT should not work undervoltage. Because of the existence of  $C_{GC}$ , when an IGBT in the bridge arm is

turned on, its high  $dv/dt$  can be coupled to another IGBT through  $C_{GC}$ , which leads to a slight turn-on of IGBT. At the same time, low gate voltage will increase the switching loss of IGBT.

### ◆ Dead Time

To ensure that the converter power module does not fail due to shoot-through caused by too small dead time, the driver has a built-in  $4\mu s$  dead time. If the dead time controlled by the host computer is greater than  $4\mu s$ , the driver will respond to the host computer's dead time; if the dead time controlled by the host computer is less than  $4\mu s$ , the driver will execute a  $4\mu s$  dead time.

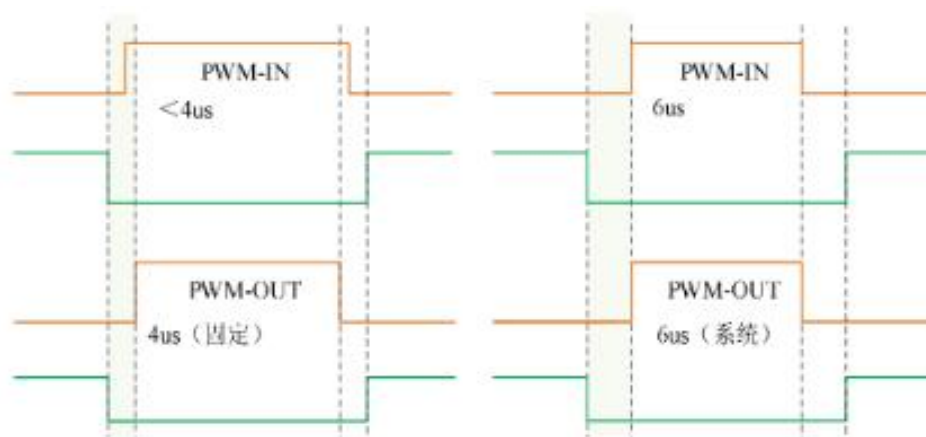


Fig.5 Driver Dead Time Logic Diagram

### ◆ Short pulse suppression

In many applications, the module may encounter a short pulse situation, and the IGBT will face the risk of too high turn-off peaks every time the IGBT is turned off by a short pulse. We detect the time of the input signal, when the time is less than  $500ns$ , the signal will be filtered out directly, which needs to be verified according to the actual test situation.

### ◆ NTC sampling

With the advancement of module package drawing technology, more and more modules begin to integrate temperature sensors internally, and NTC is one of these ways. Modules like PrimePACK™, EconoDUAL™ and so on have NTC integrated internally. Firstack's intelligent driver integrates temperature sampling and monitoring circuits, through a voltage-to-frequency conversion circuit, to converts temperature signals into frequency signals. Meanwhile, it uses isolation devices to inform the master computer of the frequency signals. Firstack's intelligent driver samples multiple channels of NTC temperature signals,

calculates the maximum temperature, and then outputs the corresponding signal.

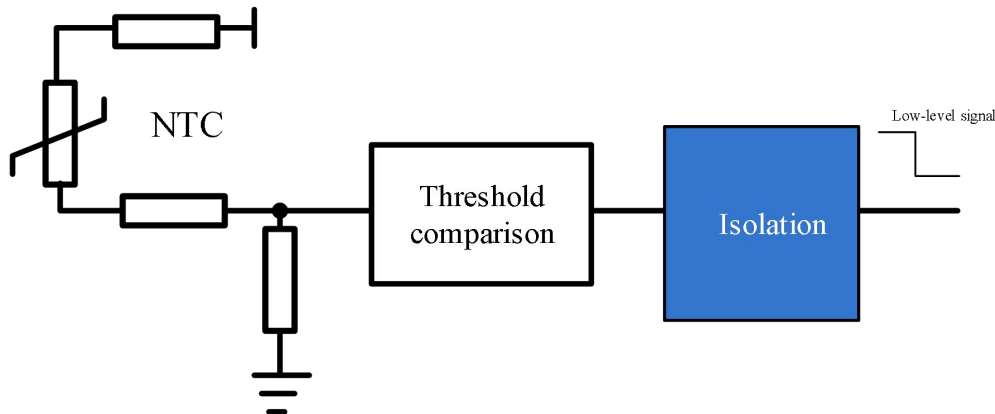


Fig.6 Temperature monitoring schematic

The 4FHS0660CA1xxxx detects the temperature of the 8 IGBTs in real time and sends low level signal to the master computer when one of the IGBTs exceeds the set threshold.

### ◆ Intelligent fault management system

In 3L-NPC, the DC bus voltage  $V_{DC-LINK}$  is higher than the withstand voltage value of any IGBT, so whether in normal operation or fault condition, it must be ensured that the IGBT outside  $S_4(S_1)$  is turned off before the IGBT outside  $S_3(S_2)$ , otherwise  $S_3(S_2)$  will be damaged because of withstanding the full DC bus voltage  $V_{DC-LINK}$  alone.

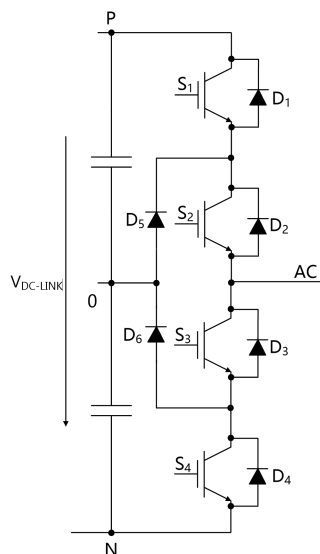


Fig.7 NPC I-type 3-level topology

In the traditional 3L-NPC GDU design, the correct turn-off timing is generally ensured by the master computer, for example, when a short-circuit fault occurs in  $S_3$ , the driver board first informs the master computer of the fault signal of  $S_3$ , and then the master computer will unify and coordinate the turn-off timing, and thus there are also several risks as follows:

1. Short-circuit protection time exceeds the maximum withstand time of IGBT:  $S_3$  itself short-circuit detection time is generally about  $8\mu s$ , plus the fault communication time, the master computer filtering time, as well as the turn-off time of  $S_4$  (high-voltage high-power module turn-off time is generally longer, in the range of  $4\sim 6\mu s$ ), the entire protection time will be more than  $10\mu s$ , which also exceeds the short-circuit safety of the IGBT operating range;
2. Protection is dependent on the master computer: from the single point of failure analysis, when the master computer fails, the protection can not be completed properly, there are security risks.

**Another risk is that traditional driver IC and even the vast majority of plug-and-play drivers tend to directly turn off the IGBT in the event of an undervoltage fault, which is not applicable to the 3L-NPC scheme, resulting in a significant safety risk.**

**Based on the analysis above, Firstack has developed a drive solution specifically for 3L-NPC: by integrating Firstack's unique "intelligent fault management system" on the primary side, it ensures the correct turn-off timing under any operating conditions.**



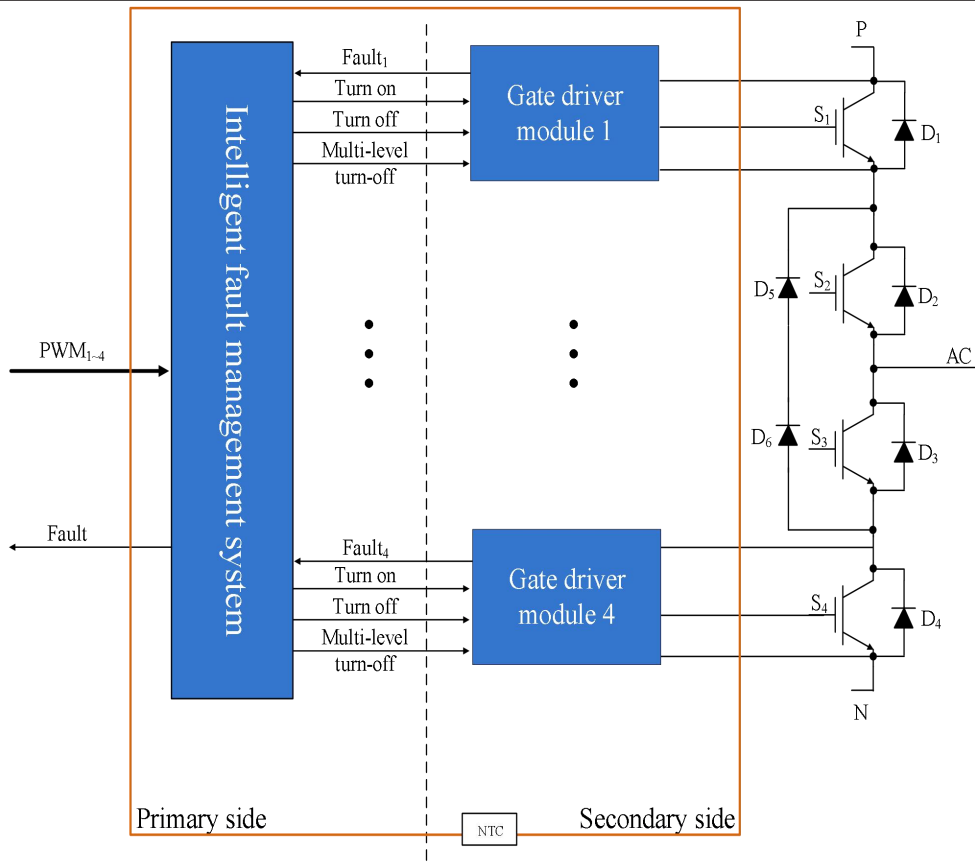


Fig. 8 Intelligent fault management system

The intelligent fault management system will monitor all four PWM signals and all four IGBT status in real time, and then give the optimal operation instruction through Firstack's unique control algorithm. When the whole machine is in continuous operation and the following faults occur, safety can be ensured:

- 1: PWM command fault: when the master computer is disturbed and sends wrong commands, or the PWM transmission path is disturbed and wrong commands appear on the gate driver side;
- 2: Connector disconnection: in the operation of the whole machine, the connector is disconnected due to vibration and other factors, resulting in uncontrolled PWM command status;
- 3: GDU power supply issues: in the operation of the whole machine, because of the failure of the power supply terminal, causing the gate driver power supply abnormality.
- 4: Short-circuit/undervoltage fault.

## Ordering Information

The 4FHS0660CA1B15V-Y01A00 supports different models of AB modules from multiple manufacturers. If you have a purchase request, please contact us, and we can provide the GDU that best meets your needs.

## Technical Support

Firstack's professional team will provide you with business consultation and technical support. Please contact the Firstack technical sales team if you require the application manual for further information of the technical application.

## Legal Disclaimer

This manual gives a detailed introduction about the product, but cannot promise to provide specific parameters. No warranty or guarantee, express or implied, is given herein as to the delivery, performance or applicability of the product.

Firstack reserves the right to modify technical data and product specifications at any time without prior notice. Firstack's general payment terms and conditions apply.

## Contact Information

Tel: +86-571 8817 2737

Fax: +86-571 8817 3973

Website: [www.firstack.com](http://www.firstack.com)

Email: [fsales@firstack.com](mailto:fsales@firstack.com)

Address: 4-5/F, Building/5, Xizi Wisdom Park, No.1279 Tongxie Road, Hangzhou, China